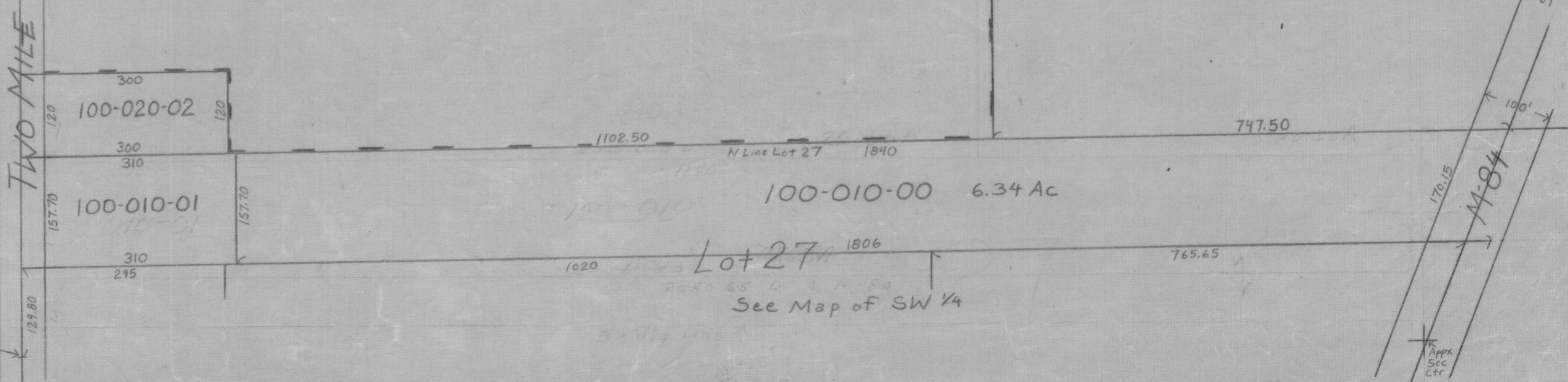


(C15)  
**CORTLAND FARMS CONDOMINIUM**  
 Units 1-96, 99-141



**CORTLAND FARMS SOUTH CONDO.**

(C16)  
 Units 1-96 -001-00 through -096-00  
 Units 99-141 -099-00 through -141-00  
 (Units 29 & 30 comb to -029-01)  
 (Units 35 & 36 comb to -035-01)  
 (Units 37 & 38 comb to -038-01)  
 Units 33, 34, 39 & 40 Deleted



★ NOTE ★  
 Entire Section 31 Lies within the  
 "Subdivision of Sec. 31 T14N R5E & part Sec. 6 T13N R5E"  
 (Liber 3, Page 21) But parcels use unplatted Numbering Scheme.

N. W. ¼ FRL SECTION 31  
 T. 14 N. R. 5 E.  
 09-100-038-100-

Scale: 1"=200'

